

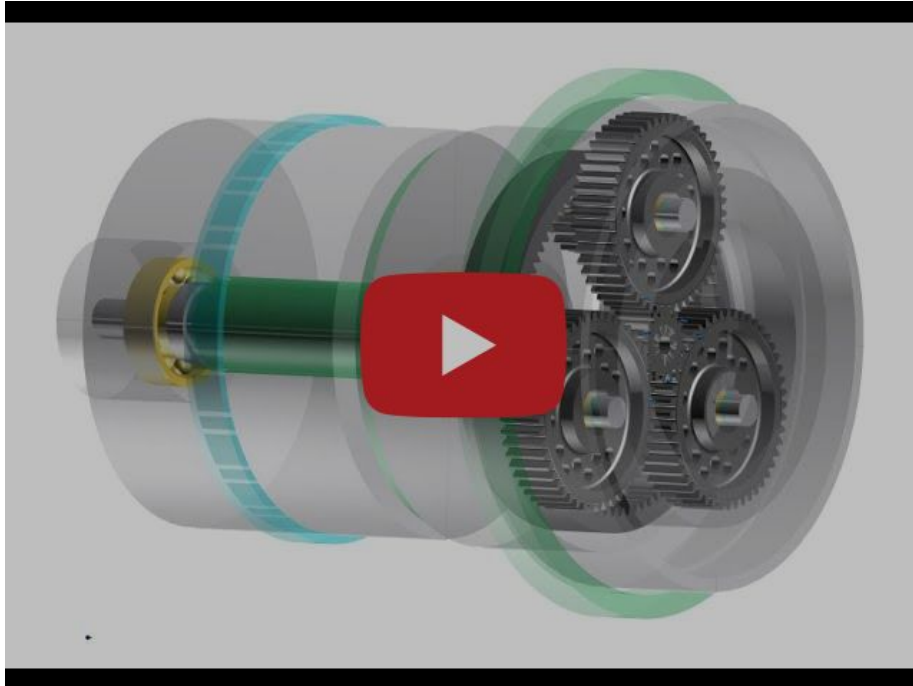
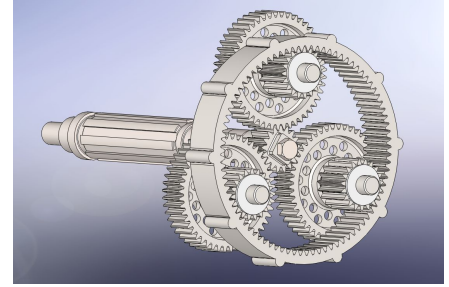
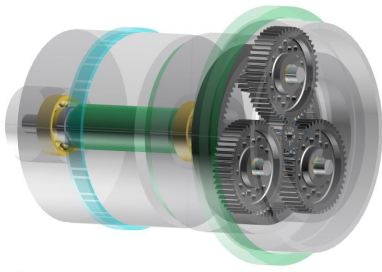


WELCOME TO OUR MARCH NEWSLETTER!

Since 2008 **Prom Racing** has been actively involved in Formula Student's world-renowned engineering institution. Our team analyzes, designs and manufactures every year single-seat racing cars and based on the distinctions of recent years is considered the most important team in Greece, and at the same time occupies a high position on the global scale. This year, we are continuing with the construction of our **10th electric** and at the same time **3rd autonomous car**, for our participation in the Driverless category.

In our Newsletters, you can read in detail the progress and goals set by each subgroup of **Prom Racing**.

components of P25's suspension and steering systems. In addition to this, we are 3D printing most of the enclosures for our electronics subsystems. Much like our aerodynamics subteam, we are also utilizing composite materials, like carbon fiber and kevlar to manufacture parts such as the firewall. At Prom Racing, we hold ourselves to a standard of excellence when it comes to our engineering.



P25's Planetary Gearbox created in [KISSsoft's](#) Software!

KISSsoft

Gear Design Software

02

|| Driverless Software

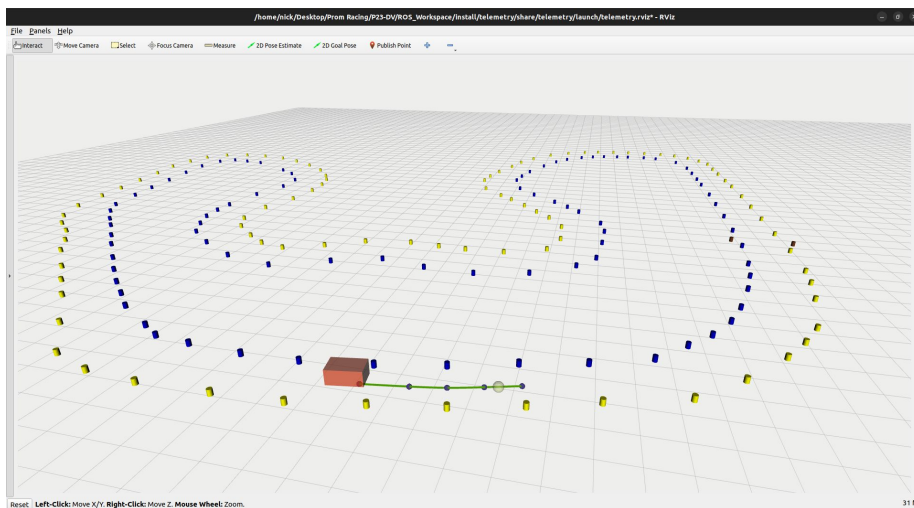
This year, we've integrated a LiDAR sensor into our system an advanced technology used by major automotive companies for autonomous driving. Elergon provided us with a cutting- edge LiDAR from SICK which helps map the environment by emitting light beams and calculating the distance to obstacles based on the time it takes for the light to return. In our case, it measures the distance



elergon

Industrial solutions

We process the sensor data and combine it with information from other sources to create a more complete and accurate picture of the surroundings. When paired with our camera systems, this setup forms a flexible perception system, capable of handling any challenge on the track.

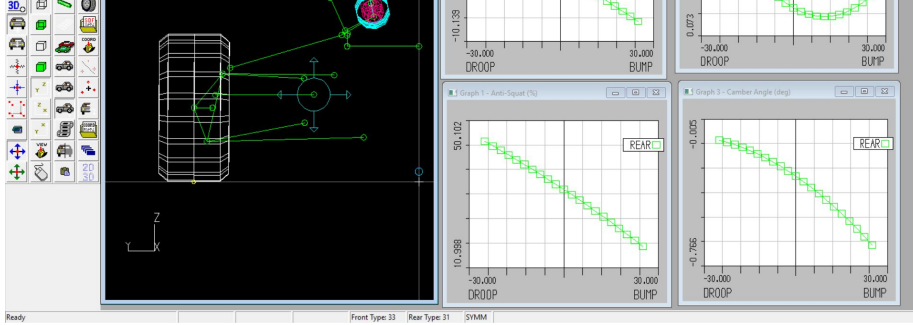


We chose LiDAR this season because it delivers faster and more accurate results than the AI-based algorithms we previously relied on, bringing us one step closer to smarter, safer performance.

03

|| Vehicle Dynamics

As the completion of P25 draws near, our team has also been focused on the crucial task of selecting and preparing drivers for the upcoming testing phase.



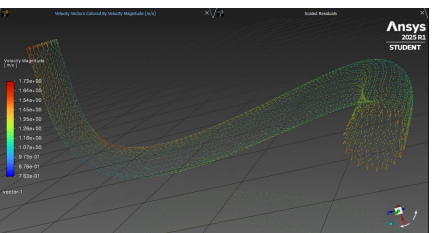
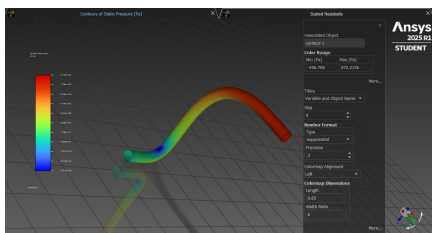
The Vehicle Dynamics subteam has organized a detailed schedule to carry out the necessary evaluation of the car's subsystems and its simulation models. Through the use of sophisticated track simulations, we are planning to evaluate potential drivers to ensure they are equipped with the necessary skill and precision to handle the car in a competitive environment. With testing season scheduled in May, this preparation is key to maximizing P25's on-track performance.



04

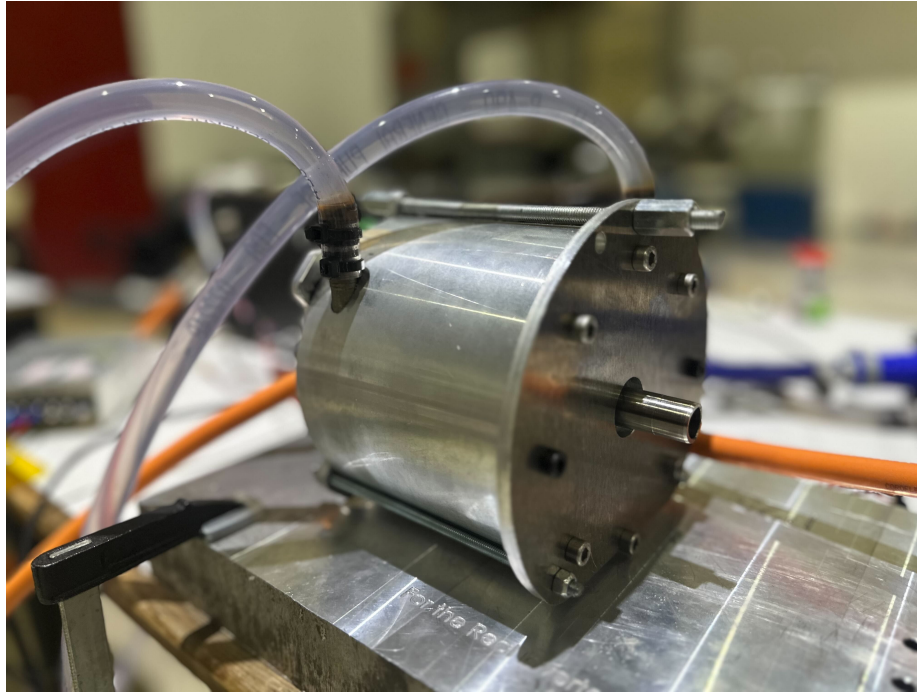
Aerodynamics & Cooling

The manufacturing of our highly anticipated aerodynamic package is now well underway. Crafted entirely from composite materials, this package is designed to optimize performance while maintaining an exceptional balance of strength and lightweight efficiency.



|| Electronics

While the manufacturing process progresses at full speed, our electronics team is already deep into the first testing of our new FISCHER electric motors within the workshop. We are using a new layout for our motor to complete the necessary validation in the workshop.



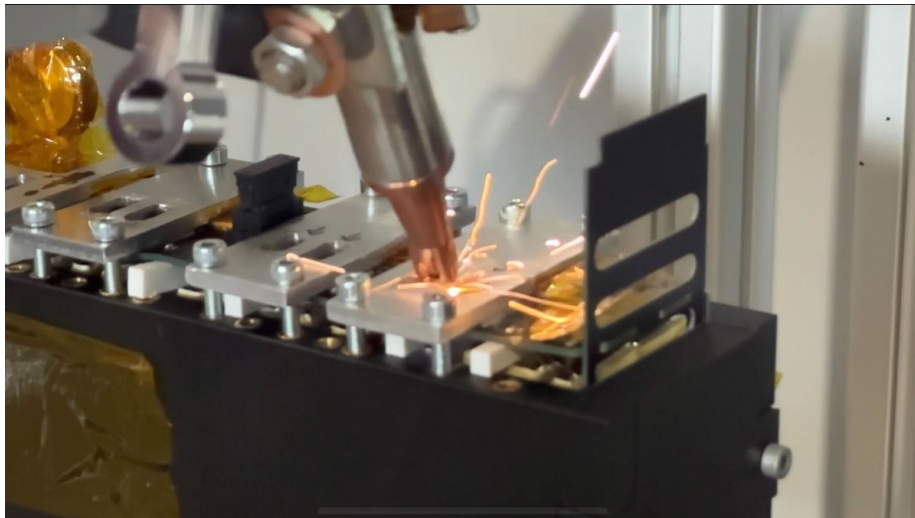
Alongside motor validation, we are approaching the final stages of the harness manufacturing which is a critical step in ensuring its communication with all the vehicle's systems. The current phase involves fitting the harness onto the car, a process that brings us ever closer to P25's debut.



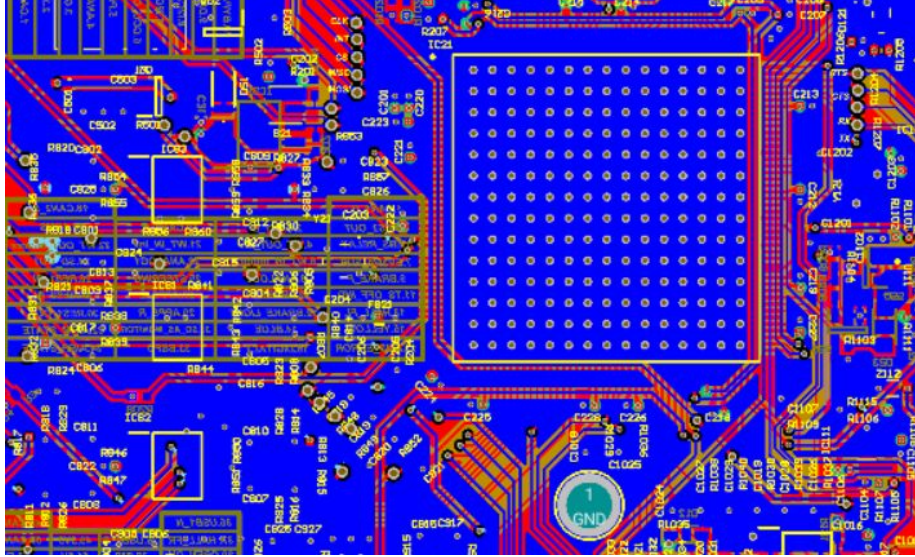
Our team is also working on our new accumulator using Melasta's pouch cells and has so far manufactured 7 out of 8 battery segments.



We have collaborated with Prime Laser Tech for laser welding technology applications on our battery tab connections to ensure the highest durability and lowest resistance.



We have also continued to manufacture our PCBs in addition to the above.



06

|| Marketing



With P25 in its final stages, the marketing subteam has been hard at work refining and finalizing the car's livery—designed to perfectly encapsulate the spirit of our team while showcasing the brands of our esteemed sponsors. Simultaneously, we are actively forging new partnerships and seeking sponsors to support various aspects of this summer's competitions, including logistics and transportation. As we move forward into the months of April and May, our team will be making appearances at several high-profile events—so **be sure to keep an eye out for us.** Additionally, we are thrilled to announce that a venue has been secured for the much-anticipated Rollout Event, where we will



In the spirit of honoring our longstanding partnerships, we proudly showcased P18 at [Global Prep](#) , one of our most valued [Platinum Sponsors](#) , who have stood by us for a total of incredible **11 years**.

SPONSORS

























































© 2025, PROM RACING NTUA, All rights reserved.

This email and its contents, including all text, graphics, and information, are the property of Prom Racing and are intended solely for the use of the individual or entity to whom this email is addressed. This content is protected by copyright and other intellectual property laws. Redistribution, reproduction, copying, or forwarding of any part of this email or its contents is strictly prohibited without the express written consent of Prom Racing.